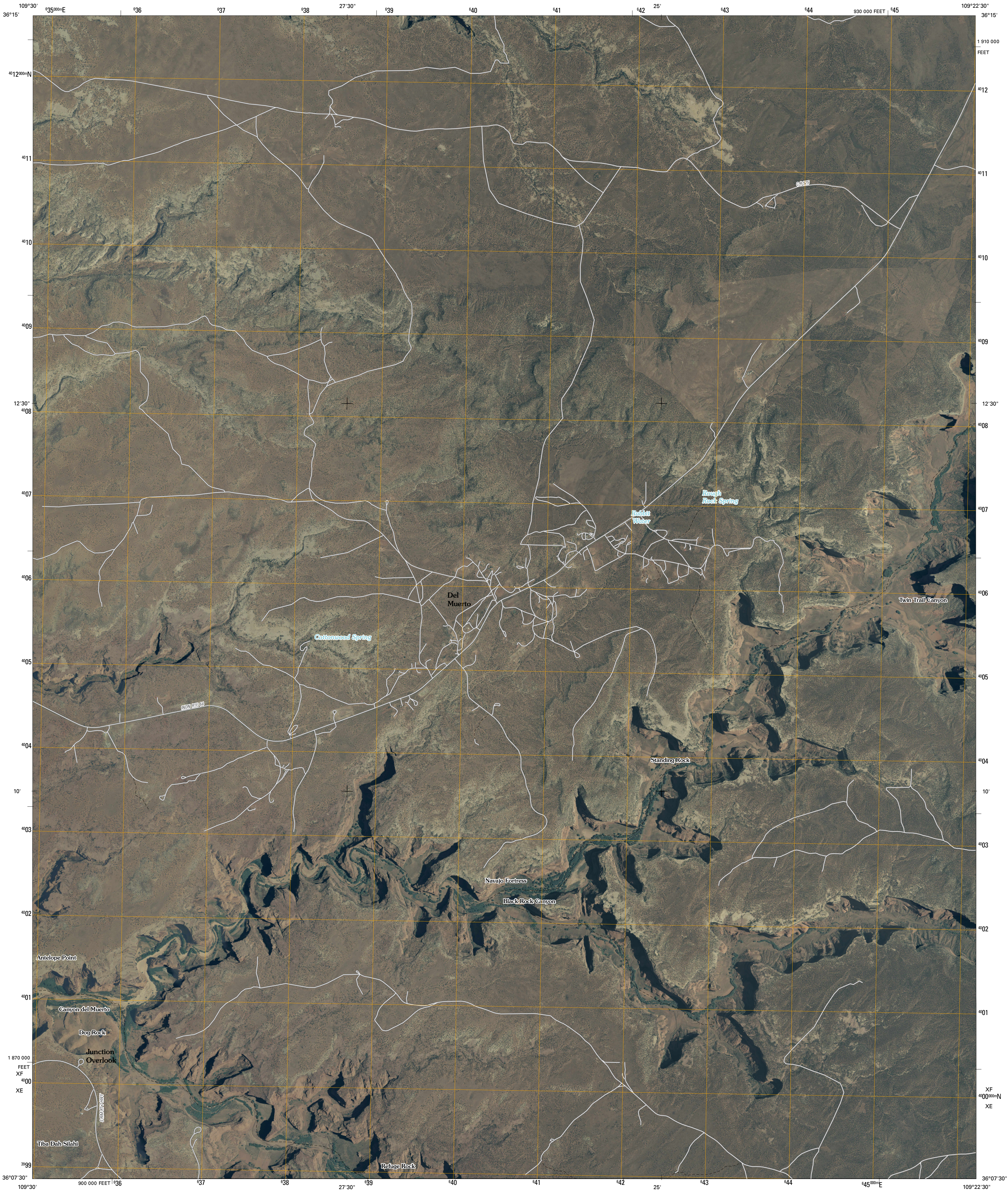




U.S. DEPARTMENT OF THE INTERIOR
U. S. GEOLOGICAL SURVEY

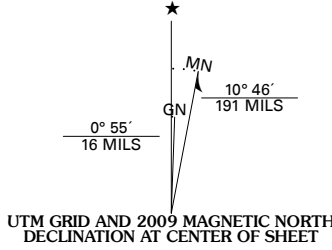


DEL MUERTO QUADRANGLE
ARIZONA
7.5-MINUTE SERIES

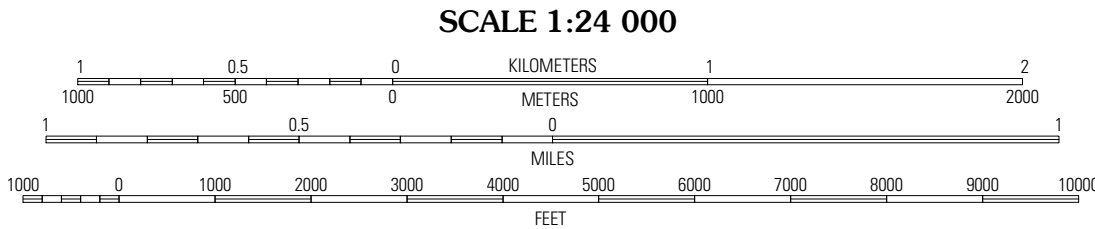


Produced by the United States Geological Survey
North American Datum of 1983 (NAD83)
World Geodetic System of 1984 (WGS84). Projection and
1 000-meter grid: Universal Transverse Mercator, Zone 12S
10 000-foot ticks: Arizona Coordinate System of 1983
(east zone)

Imagery.....NAIP, June 2007
Roads.....National Transportation Dataset, 2007
Names.....GNIS, 2008



U.S. National Grid
100 000-m Square ID
XF 08
Grid Zone Designation
12S

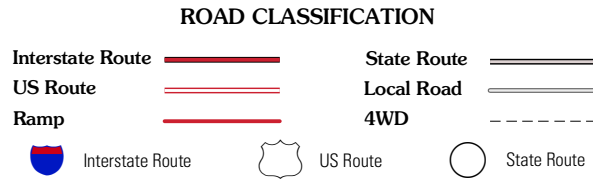


This map was produced to conform with version 0.0.25 of the
draft USGS Standards for 7.5-Minute Quadrangle Maps.
A metadata file associated with this product is also draft version 0.0.25



QUADRANGLE LOCATION		
Many Farms	Tall Tree Mesa	Red Cornfield Mesa
Chinle	Del Muerto	Mummy Cave Ruins
Little White House Ruins	Three Turkey Canyon	Spider Rock

ADJOINING 7.5' QUADRANGLES



DEL MUERTO, AZ
2009